

The Greater Phoenix Chamber Foundation (the Foundation) convenes and catalyzes business, education, and community to enhance college and career readiness, develop a stronger workforce, and build healthier communities throughout Arizona.

KEY PILLARS



WORKFORCE DEVELOPMENT

Serving as a catalyst for partnership, the Foundation convenes six employer-led workforce collaboratives to address the growing skills gap facing our community, with the goal of increasing the number of qualified candidates applying for positions, reducing time to hire, and improving retention.



Advanced Manufacturing



Construction



Cybersecurity



Financial Services



Health Care



Information Technology (IT)



The Foundation teamed up with Career Connectors to host AZ Careers NOW, a series of hiring events that will connect Valley employers with the talent they need. A combination of virtual and in-person events will enable hiring managers and job seekers to connect in ways that are most meaningful and convenient for them.



Build Your Future Arizona's mission is to create a sustainable and skilled craft workforce by creating awareness about high-paying construction careers, training opportunities, and mapping career paths to employment in these high-demand occupations.



Based on the Skills for America's Future jobs-first approach, Connect to Work AZ connects employers to Arizona's historically underserved communities. The program supports quality jobs and economic mobility for those who need them most, while helping employers meet hiring, diversity, and social responsibility goals.



ElevateEdAZ prepares Arizona students for college and career through stronger alignment between education, business, and the community. ElevateEdAZ is embedded in 13 high schools across five school districts and networks, working to increase the number of:

STUDENTS PURSUING
**HIGH-WAGE,
HIGH-DEMAND
CAREERS**

STUDENTS EARNING
**EARLY-COLLEGE CREDIT
AND INDUSTRY-RECOGNIZED
CREDENTIALS**

STUDENTS COMPLETING
**INTERNSHIPS AND
JOB SHADOWS**

EDUCATORS PARTICIPATING
IN EXTERNSHIPS
TO TEACH STUDENTS RELEVANT
WORKPLACE SKILLS

Accelerate **ED**

Through ElevateEdAZ’s participation in Accelerate ED: Seamless Pathways to Degrees and Careers, the education initiative will use advanced manufacturing as a model industry to help students earn 30 credits of dual enrollment toward manufacturing degrees at Maricopa County Community Colleges and attain an associate’s degree within a year of graduating high school.

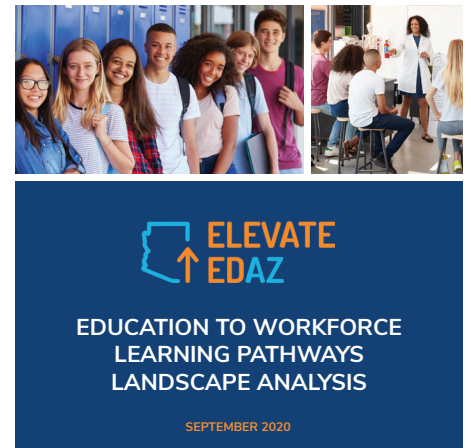


Wellness **AtoZ**

Wellness AtoZ provides employer toolkits that share the four Wellness AtoZ principles and promote employee wellness efforts in Arizona. Wellness AtoZ aims to make Arizona and the Greater Phoenix region known as a destination for healthy talent and a healthy community.

RESEARCH

The Foundation publishes data-driven research on education, workforce, public policy, and economic trends to inform local and national leaders, policymakers, and the general public.



Connect with Us: @phxchamberfound



Greater Phoenix Chamber Foundation
2575 E. Camelback Rd., Suite 410
Phoenix, AZ 85016
foundation@phoenixchamber.com
phoenixchamberfoundation.com